

Naseel Technical Services Est.

Corporate Profile

Innovative Solution Service Provider



CIVIL WORK - MEP - HVAC - INTERIOR & FITOUT - EXTERIOR - KITCHEN SPECIALIST - FARMS - SWIMMING POOL - WAREHOUSE SOLUTION





Naseel Technical Services Est. is a Dubai based Design & Build Service Company, we offer complete turnkey project solution for the following

- Construction service of Residential & Commercial properties such as Villa, Shopping Malls, Apartment , Hospital sector, School, Colleges, Warehouses, Plant
- MEP Works – Plumbing, Electrical & HVAC
- Interior & Fit-Out works
- Infrastructure work
- Landscaping work, Swimming Pool works & Pergola
- Kitchen Specialist
- Complete Renovation with cost effective
- Energy Saving Specialist
- Overall Warehouse Solution & Racking System
- Green House Farms ,Container Solution
- Plant Equipment Erection

Naseel Technical Services Est. as one of the leading well experiences engineering contractors with wide experience in the field of fabrication and erection and building construction engaged in design, engineering manufacture and erection of industrial and commercial building.

We are committed to providing the best possible construction expertise & service to ensure cost effective and successful projects We work closely with our clients to accurately interpret their dreams/visions in drawings and bring them to the desired reality through construction solutions to meet their needs; we communicate with our clients throughout the construction process to keep them informed of progress and to ensure that our project keeps on schedule and within budget. Our principals collective experience offering the highest standards for safety, quality, and integrity. Dedicated to excellence, we utilize innovative building contraction, maintenance and renovation skills to change and improve the way Projects are designed, managed and build.



About us

We take pride on our past projects
and plan for a successful future....

We
Believe in
and
Promote
Quality
Delivery

Our Vision

A regional market leader in provision of civil engineering and building construction services, inter

Our Mission

We aim to be a world class engineering Construction Company providing efficient affordable, sustainable, cost effective services of highest level of quality.

- To commit and fulfill.
- To inspire moments of optimism and happiness.
- To create high value and make a difference.

Our Values

We believe in maintaining the highest standard of professionalism, integrity, creativity, positive attitude, delivery that meets & surpass expectations while offering prompt and lasting solutions that stand the test of time.



OUR SERVICES

We offer a range of services listed below to make your life simpler, by managing your installation & maintenance requirements, a service that we are proud of. Our highly trained installation teams have undertaken many challenging projects and in spite of demanding deadlines, delivered quality installations time after time. We are committed to delivering successful projects, on time, within budget and exceeding your expectations

Design & Build	Construction Waste Management
Turnkey Interior Solution	Innovative Interior Solution
Project Management	Materials Analysis Application
Efficient Utility Space Planning	Manpower Effective Management
Value Engineering	Cost Control Management
Quality Control	Customer Complaint & Comments Coordination
Health & Safety	Authority Regulation Amendment
Environment Management	Machinery & Automation System Implementation
Utility Energy Saving Management	Building Age & Life increase Cycle Management
Property Study & Survey	Property Insurance Arrangement & Cooperation

Our Client



阳光国际
Soluxe International



CNPC

KABRI



ProConnect
Integrated Logistics
a Redington company



Ansamble
Catering & Services Middle East



Gateaux

Our Service

Type of Service work	Application
Sound Proof Glass Works	<ul style="list-style-type: none">• Window• Balcony Doors
Glass Partitions Work	<ul style="list-style-type: none">• Office Cabins, Doors & Shower Canopy
Gypsum Works	<ul style="list-style-type: none">• False Ceiling & Office Partition
Civil Works	<ul style="list-style-type: none">• Block Works• Tiles Works• Water Proofing Works• Painting Works
Joinery Works	<p>All kind of joinery works for the for the office, Residential</p> <ul style="list-style-type: none">• MDF• Wood• Aluminum• Kitchen cabinets , wardrobe & office furniture
Flooring	<ul style="list-style-type: none">• Stone Plastic Composite Flooring-SPC• Wooden Flooring• PVC – Vinyl Flooring• Carpet flooring
MEP Services	<ul style="list-style-type: none">• Plumbing – Drainage & Water Supply• Electrical• Low Current System - CCTV & Telephone• HVAC - Ducting Works & Chilled Water Pipes Works• Chiller Installation• Home Automation system• Energy Saving System

<p>Farms Works</p>	<p>Hydroponic System</p> <ul style="list-style-type: none"> • Nutrient Film Technique System (NFT): Vertical & Horizontal • Aeroponic System • Indoor Grow System • Deep Water Culture System • Fodder Farms <p>Green house farm</p> <p>Container farm</p> <p>Live stock</p>
<p>Warehouse Solution</p>	<ul style="list-style-type: none"> • Warehouse Roofing System • Sandwich Panel Work • Steel Structure • Rack System • Mezzanine Floor • Staircase Ladders • Overall Refurbishment Warehouse • Plant Erection • Cold Storage System
<p>Hospital Solution</p>	<ul style="list-style-type: none"> • Medical Gas Piping System • Customized Bedhead unit • Laminar Hood System
<p>Swimming Pool & Pool Bar</p>	<ul style="list-style-type: none"> • Pool Bar Counter • BBQ Counter • Swimming Pool
<p>Interior & Fit-out Works</p>	<ul style="list-style-type: none"> • Restaurant & Cafeteria • Office • Schools • Clinics , Spa • Show rooms



Simplicity, Carried to an
extreme becomes elegance

Kitchen Solution



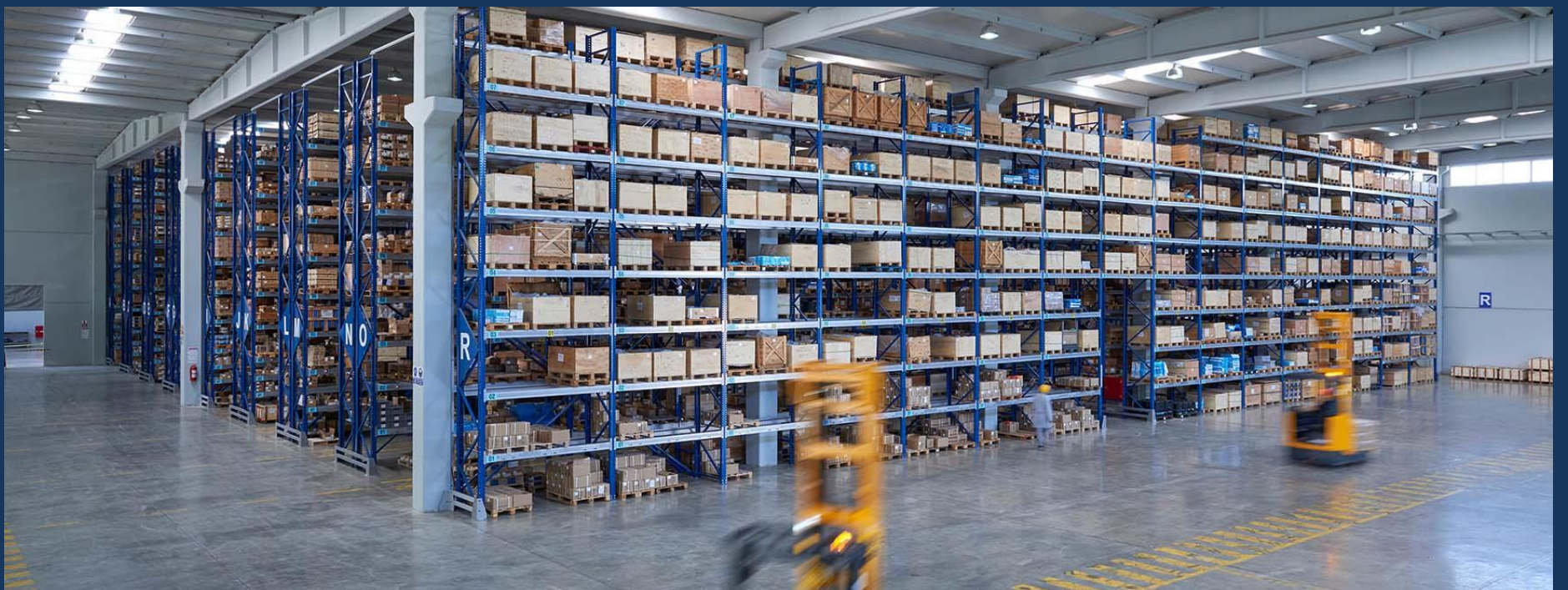
Warehouse Solution





- Distribution Center
- Pick, Pack & Ship Warehouse
- Smart Warehouse
- Cold Storage
- Consolidation Warehouse

*We are the Specialist for
Warehouse solution*

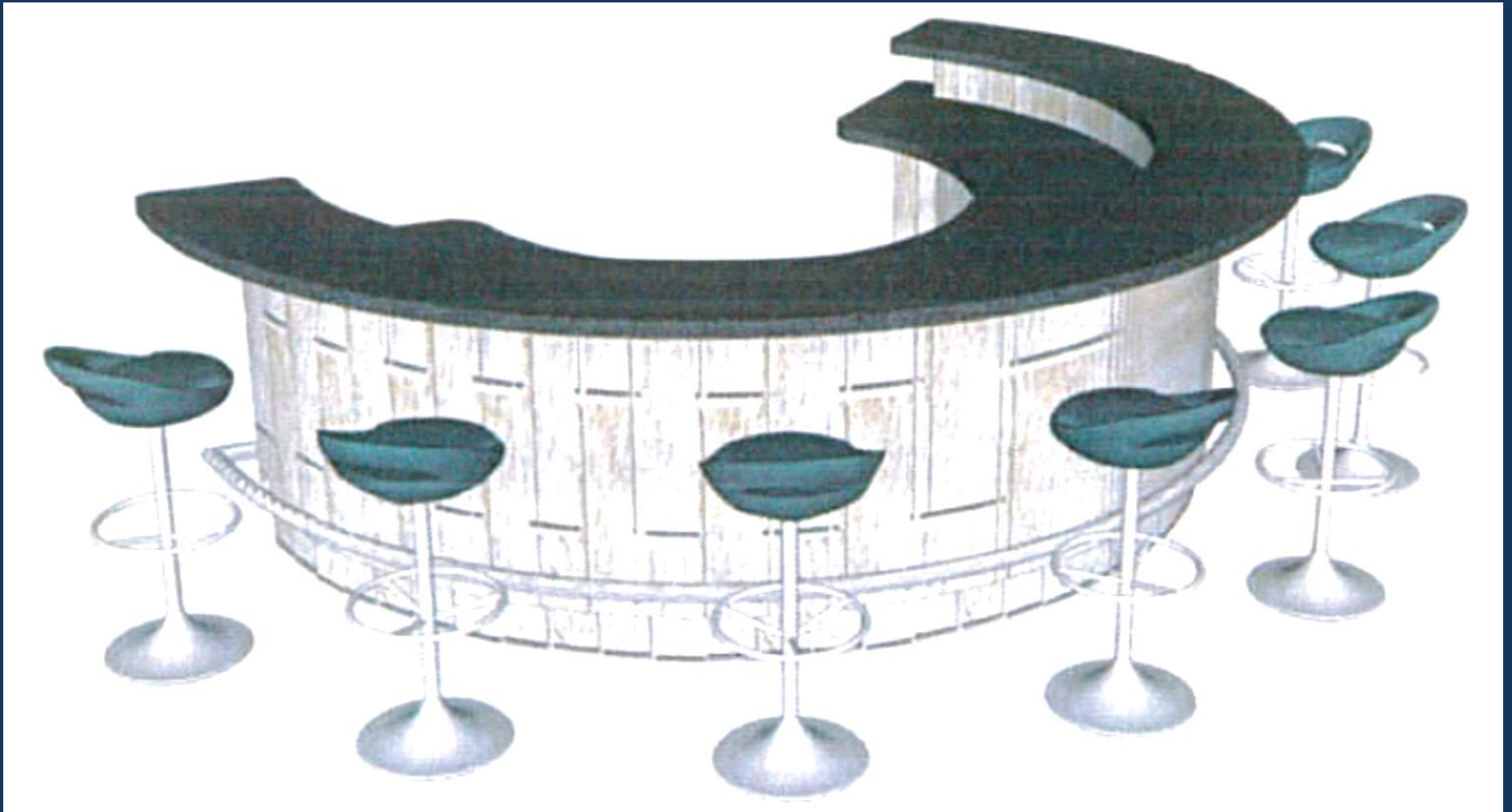


Farm work Solution

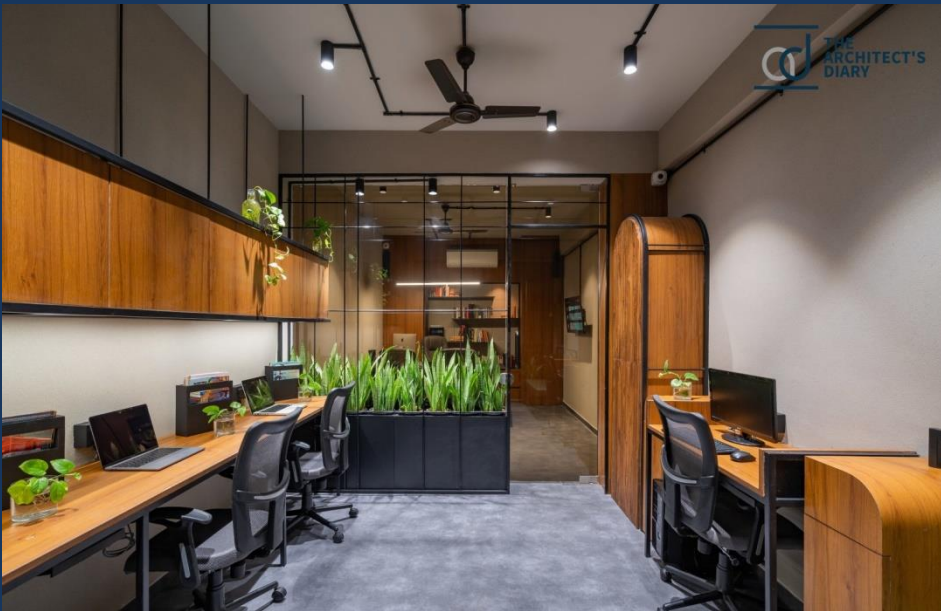
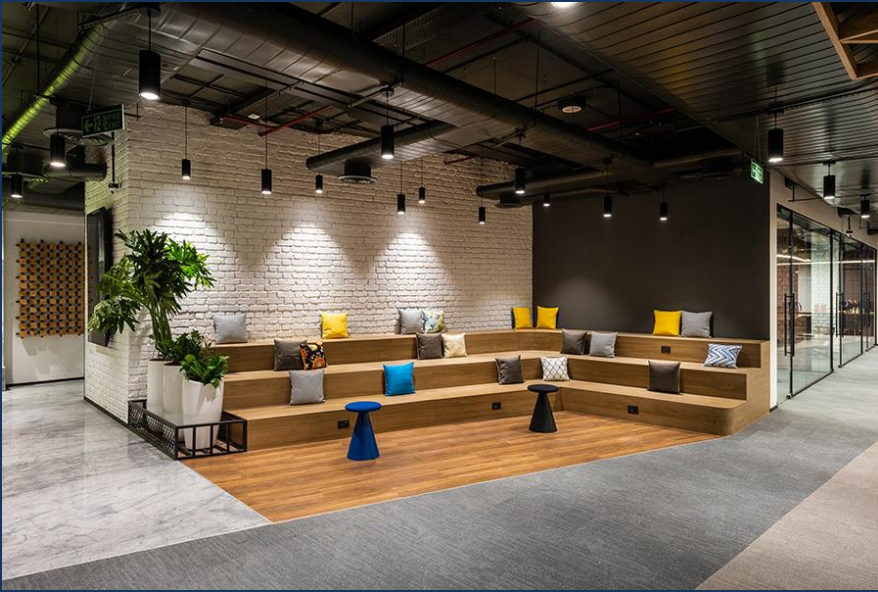




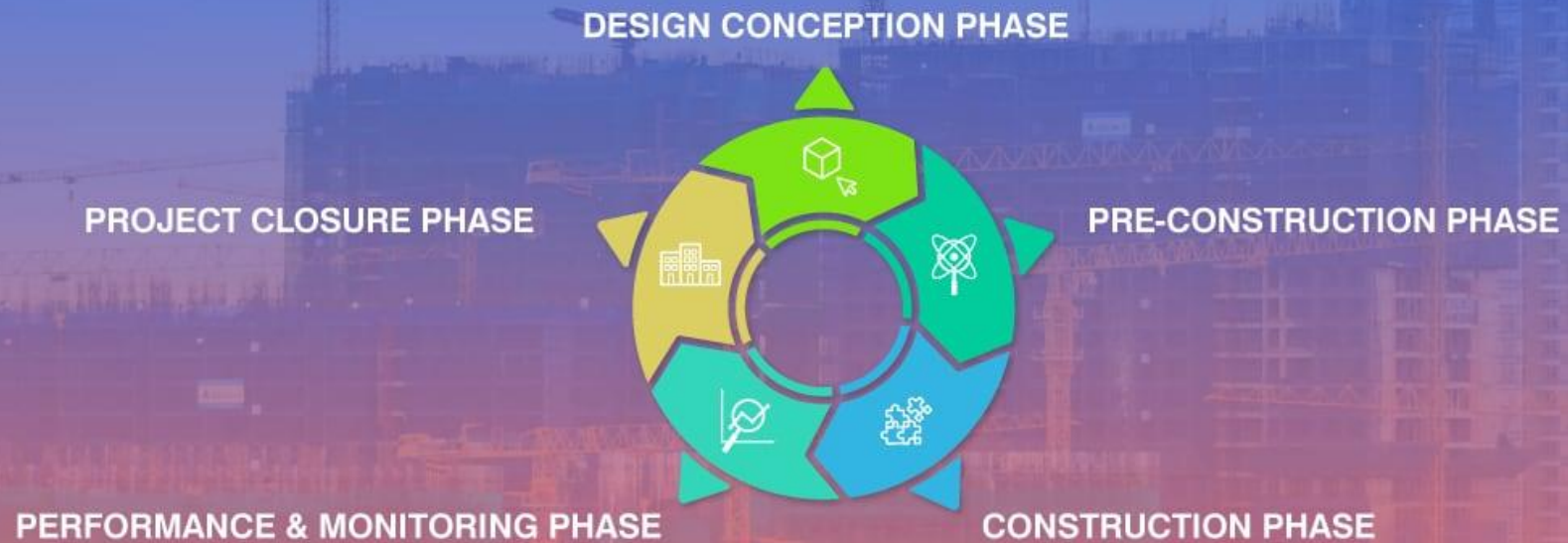
Pool Bar Counter



Interior Fit out Works



UNDERSTANDING THE 5 IMPORTANT STAGES OF CONSTRUCTION PROJECT LIFE CYCLE



EXCAVATING AND SITE PREPARATION



STAGE
01

MAKING PROGRESS

- INSTALLING ELECTRICAL, PLUMBING, AND HVAC
- INSTALLING INSULATION
- INTERIOR WALLS - DRYWALLING



STAGE
03

ALMOST HOME!

- EXTERIOR FINISHING
- FINISHING MECHANICAL
- FLATWORK: DRIVEWAYS AND WALKWAYS



STAGE
05



STAGE
02

THE THREE F'S

FOOTINGS,
FOUNDATIONS, AND
FRAMING



STAGE
04

CABINETS, TRIM, PAINTING, AND FLOORING

- INSTALLING CABINETS
- PAINTING
- LAYING THE FLOORING



STAGE
06

LAST LAP

- CLEANING UP
- PUNCH LIST
- FINAL INSPECTION

Naseel Tech

FROM START TO FINISH: THE TIMELINE FOR CONSTRUCTING A BUILDING



CONSTRUCTION INDUSTRY

QUALITY POLICY



Quality Policy

NASEEL TECHNICAL SERVICES EST. is committed to the highest ethical standards, demonstrated to our employees, our customers and our suppliers by our quality management system. Integrity is the foundation of our organization; Teamwork is our strength; Excellence is our goal.

Objectives

NASEEL TECHNICAL SERVICES EST. Quality Management System Ensures the following:-

- Complete Customer Satisfaction
- Products and services are compliant with regulatory requirements
- Business process meet (or) exceed industry standards
- Overall employee satisfaction
- Consistent and clear Internal / External communication

Saravanakumar

Manager



HEALTH SAFETY & ENVIRONMENT

Safety doesn't happen by accident. We believe in keeping you safe

Safety Policy

We at NASEEL TECHNICAL SERVICES EST. Team are committed to continual improvement in health, Safety and welfare of all its employees and those who is under its influence in the neighborhood and community at large.

To achieve this goal, we shall:

- Provide and maintain safe and healthy working condition and upkeep our installation, equipment, process and operations.
- Enhance awareness, Skill and competence of our employees and contractors to effectively involve them in ensuring safety for everyone.
- Comply with all applicable statutory and regulatory requirements.

The health and safety policy of the company will be communicated to all employees and made available to all interested parties.

Saravanakumar

Manager



By Post:-

Naseel Technical Services Est.

Post Box: 81889

Dubai, U.A.E

By Telecommunication:-

Phone: + 971 55 491 2700

By Email:-

naseeltech@gmail.com

By Website

Under Construction

By Social Media:-

